



talent
SOLUTIONS

The international student market – Are you missing out?



talentsolutions.co.nz

Our Services



Your presenters today



Director

**Seren
Wilson**

Talent Solutions



Director

**Andy
O'Dell**

O'Dell immigration





Poll

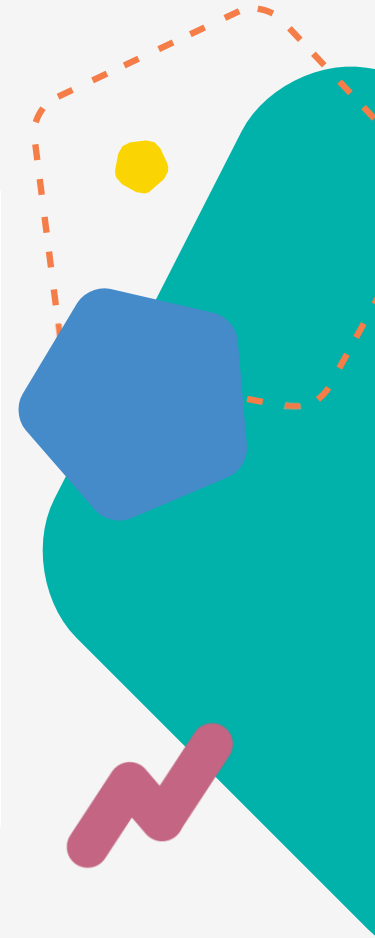
Do you currently accept applications from international students?



talentsolutions.co.nz

International Students by Subject Area

	Bachelors	Honours	Masters	PhD
Information Technology	35.5%	38.4%	69.1%	68.75%
Engineering and Related Technologies	31.25%	15.1%	54%	77.1%
Management and Commerce	28.5%	44.1%	64.9%	68%
Agric, Environmental and Related Studies	11.1%	19%	38.5%	70%



Reference: <https://www.educationcounts.govt.nz/statistics/achievement-and-attainment>



Poll

Barriers to recruiting international students



talentsolutions.co.nz

What we will cover



01.

The international student market

02.

A GRAD AT YOUR PAD

03.

Visa options for employing your grad

04.

Stories

05.

Questions



Working after
completing study

The Journey



Just Graduated



Settling In



The long haul



The Journey

Just Graduated



Student Visa



Just Graduated

Student Visa

- Allows work during study of up to 20 hours per week, and during holiday periods of full time hours.
 - Student visas often run beyond a period of study – for example if formal study ended on 20th November 2022, visa runs to 31 March 2023
 - Once study has ended, visa holder can work full time in the period remaining on visa whilst organising a longer term alternative*
- Only a short term option
 - Must be kept an eye on to avoid over-running
 - Does not guarantee a subsequent visa type
 - Does not guarantee work rights an interim



The Journey

Settling in

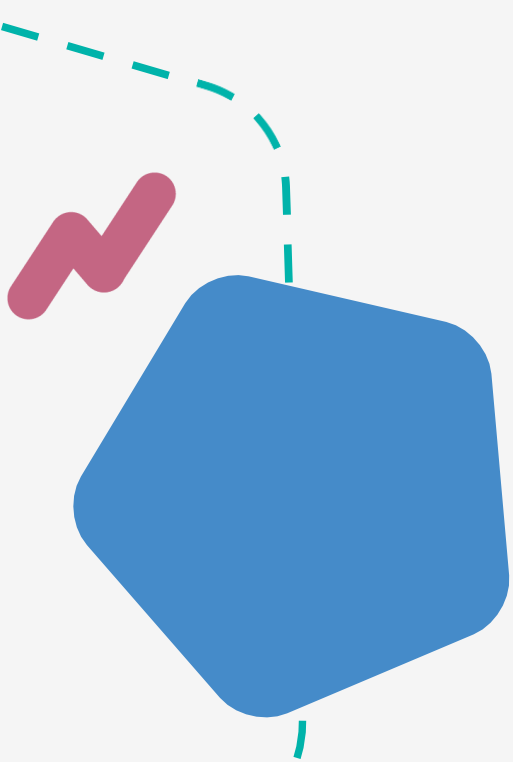


Post study work visas



Settling In

Post Study Work Visa



KEY ELEMENTS

- Allows holder to work for up to three years post study
- 90% of applications decided within 4 weeks
- Some applicants receive open work rights

...what do I mean by some?

You had to ask didn't you.



Settling In

Post Study Work Visa

**STUDENT VISA APPLIED FOR BEFORE
12th May 2022**

- Level 4 or higher qualification?
- Open work rights for 1 to 3 years -
depending on study duration

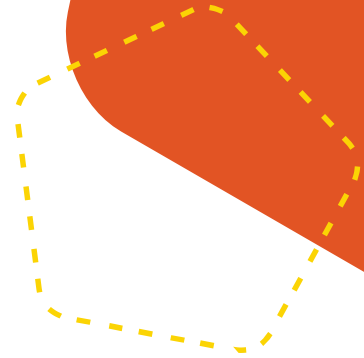


Settling In

Post Study Work Visa

STUDENT VISA APPLIED FOR ON OR AFTER 12th May 2022

- Non-Degree Level 7 or below?
- Limited to 'Qualifications Eligible for a Post Study Work Visa list'
- Quantity Surveyor, Secondary School Teacher, Engineering Technician, Project Builder, Mechanic, Dairy Farmer



- Level 7 Degree or above?
- Open Work Rights
- No restrictions on who you can work for, or what you can do



The long haul

Accredited Employer Work Visa



- No requirement to relate employment to study
- Employer needs to be accredited with INZ
- Employer has to contribute to the process via a Job Check costing \$610
- Once approved, there's a 4 to 8 week turnaround
- Most* roles must meet median wage of \$29.66/hr = \$61,692.80



The long haul



Subsequent AEWV



Straight to Residence (StR)

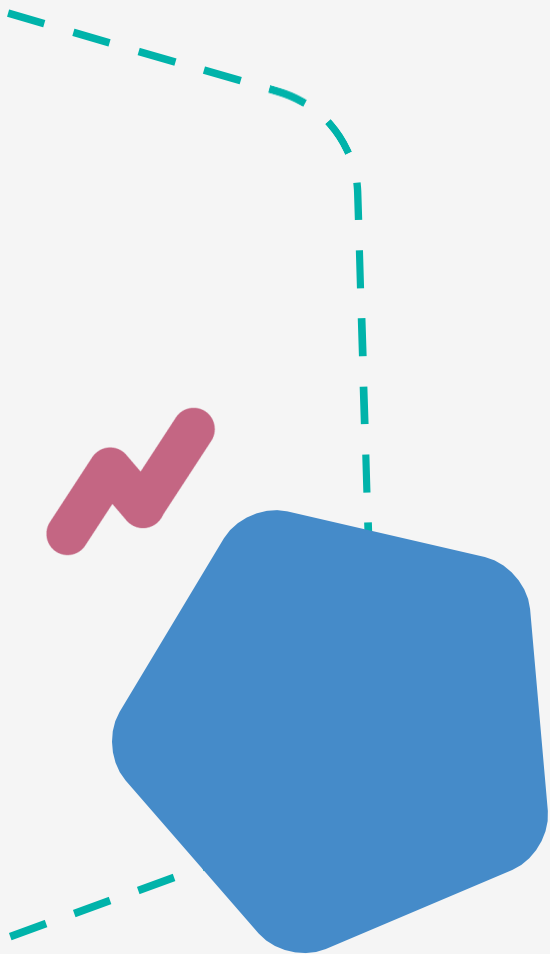
- Some Green List roles allow a pathway to residence
- Level 7 or above qualifications supporting this includes
 - IT
 - Engineering



Skilled Migrant Category (SMC)



Questions



talentsolutions.co.nz



Get in touch



Director

Seren Wilson

Talent Solutions

seren@talentsolutions.co.nz



Director

Andy O'Dell

O'Dell Immigration

andy@odellimmigration.co.nz





talent
SOLUTIONS

Thank You

talentsolutions.co.nz

Link List



- [Rules for student visa working](#)
- [Rules for student visa holders valid until 31st March](#)
- [Post study work visa options](#)
- [Qualifications Eligible for a Post Study Work Visa list pre 12/05/22](#)
- [Qualifications Eligible for a Post Study Work Visa list 12/05/22 onwards](#)
- [Accredited Employer Work Visa \(AEWV\) details](#)
- [The Green List](#)
- [Straight to Residence \(StR\)](#)
- [Skilled Migrant Category \(SMC\)](#)

